

South and East Lincolnshire Crowd – Two Year Progress Report

Introduction

Boston Borough Council on behalf of South Holland District Council and East Lindsey District Council commissioned Spacehive in Autumn 2022 to set up and operate a crowdfunding platform for the South and East Lincolnshire Councils Partnership. The platform helps leverage in funds for community projects from not only Council sources but also via other members of the community.

The fund has now been in operation for two years and has supported 10 successful projects across the partnership. Which collectively have attracted over 395 pledges, contributing to a total project value of £105,497

Data

The following information covers 11 project ideas, covering the period February 2023 to February 2025. During this time there were three official funding windows for projects to raise funds. 10 projects (91%) have reached their target and have now finished raising funds.

Since the South & East Lincolnshire Crowd launched...



Leverage

The total cost of successful projects on the South and East Lincolnshire Crowd is £105,497 of this £49,320 was pledged by the South and East Lincolnshire Crowd and the remaining £59,267 from 395 pledges from the 'crowd'

It should be noted that the South and East Lincolnshire Councils Partnership commitment to the programme consists of both grant giving and the cost of the annual contract fees. The programme operates two rounds per annum, Spring and Autumn. The contract value to date is calculated at £68,000 – the contract is split equally between the 3 councils.


Projects

To date 91% of projects that have launched have hit their funding target.

The biggest project so far being Fydell House (project total £22,632) with the smallest being Remembering Spilsby Union Workhouse (project total £2765) . Projects see a good range of supporters with one project seeing 60 backers . Projects also see a range of financial contributions with contributions starting as low as £2. See appendix A for an example of the impacting reporting received from projects.

Spring funding round for 2025 opened 27th February for projects to begin to develop their ideas.

Details of projects:

<p>Tydd Dog paddock play area</p> <p>South Holland pledge pot contribution £2000</p> <p>Crowd Contribution £3520</p> <p>Category: Sport and Play Park and Gardens</p>	 <p>34 backers</p> <p>£5,520 raised</p>
--	---

Social and Educational activity – Lithuanian Community Group

Boston pledge pot contribution - **£3,500**

Crowd contribution - **£5,154**

Category:
Sport and Play
Arts and Culture



32
backers

£8,654
raised

Restoration of Goluceby Church

East Lindsey pledge pot contribution - **£1,800**

UKSPF pot contribution - **£3,000**

TOTAL - **£4,800**



Crowd contribution - **£5,875**


Category:
Buildings





23
backers

£10,675
raised

<p>Spalding Museum – The Future</p> <p>UKSPF pot contribution - £3,000</p> <p>Crowd Contribution - £9,846</p> <p>Category: Arts and Culture Buildings Street and Infrastructure</p>	 <p>60 backers</p> <p>£12,846 raised</p>
<p>Taste it Lincolnshire</p> <p>South Holland pledge pot contribution - £1,500 Boston pledge pot contribution - £1,500 East Lindsey pledge pot contribution £750 UKSPF pot contribution - £3,000 TOTAL - £6,750</p> <p>Crowd Contribution - £8,240</p> <p>Category: Arts and Culture Food and Farming</p>	 <p>36 backers</p> <p>£14,990 raised</p>

<p>Fydell House</p> <p>Boston pledge pot contribution - £5,000 UKSPF pledge pot contribution £3,000</p> <p>TOTAL £8,000</p> <p>Crowd Contribution - £14,632</p> <p>Category: Arts and Culture Parks and Gardens Buildings</p>	 <p>35 backers</p> <p>£22,632 raised</p>
<p>Remembering Spilsby Union Workhouse</p> <p>East Lindsey pledge pot contribution - £480 UKSPF pot contribution - £1,300 TOTAL - £1780</p> <p>Crowd contribution - £985</p> <p>Category: Arts and Culture</p>	<p>29 backers</p> <p>£2,765 raised</p>

<p>Young Farmers Gardening Club</p> <p>Boston pledge pot contribution - £3,000</p> <p>Crowd Contribution - £3,062</p> <p>Category: Parks and Gardens Sport and Play Food and Farming</p>	 <p>47 backers</p> <p>£6,062 raised</p>
<p>Crafty Cabin</p> <p>East Lindsey pledge pot contribution - £5,000 UKSPF pledge pot contribution - £3,000</p> <p>Crowd contribution - £5,019</p> <p>Category: Buildings</p>	<p>36 backers</p> <p>£13,019 raised</p> 
<p>Rural Friendship Group</p> <p>East Lindsey Pledge Pot contribution - £2,400</p> <p>UKSPF pledge pot contribution - £3,000</p> <p>Crowd contribution - £2,928</p> <p>Category: Art and Culture Sport and Play</p>	<p>51 backers</p> <p>£8,328 raised</p>

Communications

The South and East Lincolnshire Crowd requires awareness raising – first to attract project creators and then secondly to attract project supporters to pledge to these projects. This has been done through a variety of routes, including signposting, social media campaigners, press releases and Member briefings and projects can directly inform people through their own websites and social media campaigns.

There have been four press release featuring the South and East Lincolnshire Crowd and also a number of leaflets have been distributed to community groups to inform them of the scheme.

Lithuanian Community Group – Cultural activities

“Our Christmas event on December, attracted over 400 individuals from various cultural backgrounds. With your support, we curated a memorable experience featuring children's clubs, adult performers, and traditional theatre acts. The resounding success of this event not only brought our community closer together but also facilitated cultural exchange and appreciation among attendees from diverse backgrounds”

“The Pancakes Day event in February, saw over 200 attendees gather at Boston Market Place Square, the Methodist Church Garden, and the Local Community Centre. Through captivating performances, interactive games, and delectable traditional cuisine, we fostered an inclusive atmosphere that brought joy and camaraderie to all who participated.

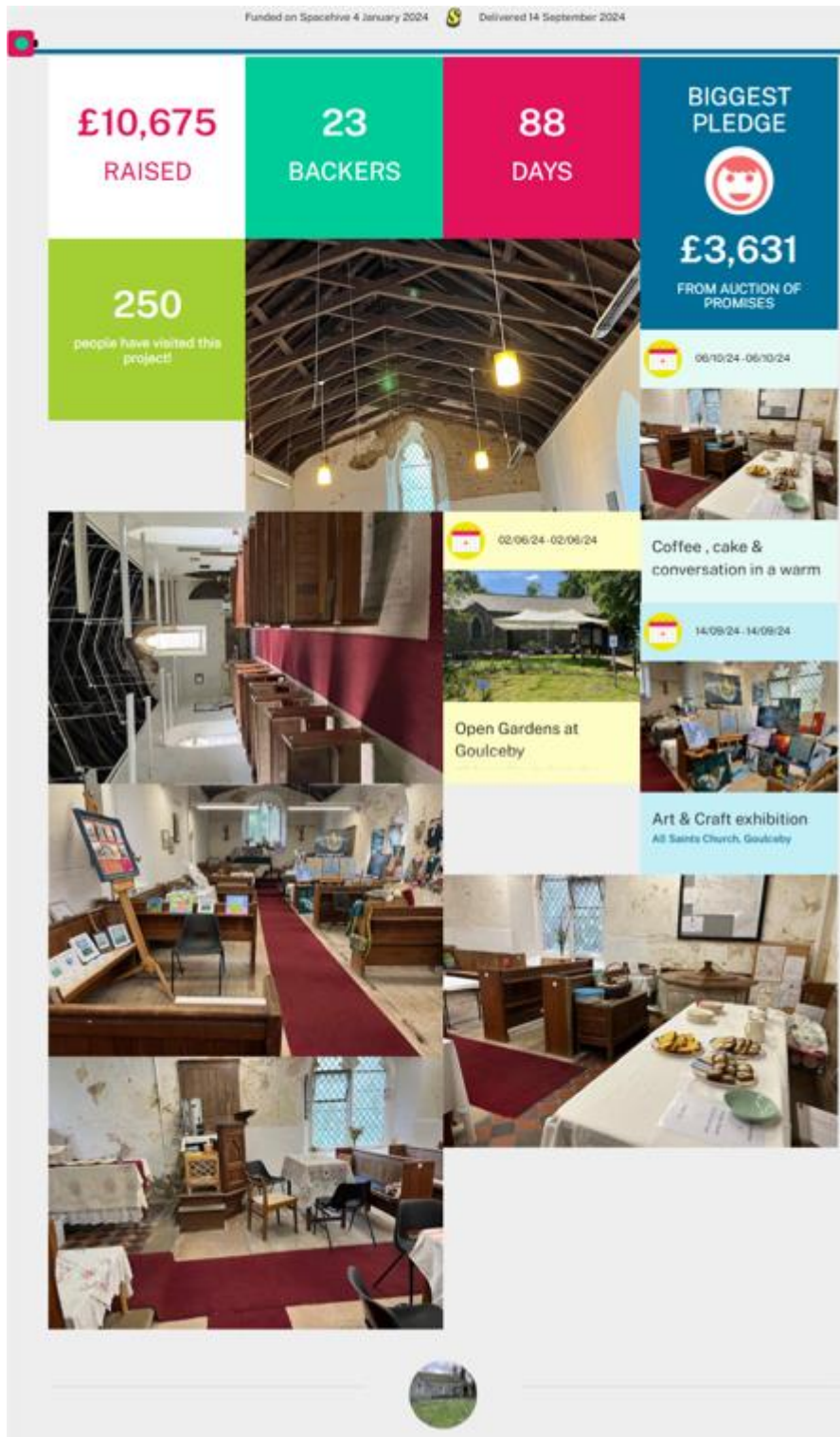


Young Farmers Gardening Club

A weekly children's gardening club on Saturday mornings, as well as a weekday club during half terms and school holidays, giving parents an alternative holiday club option.

Target -£6,082
48 backers
Boston







The Latest from All Saints Church Goulceby

The church has been completely rewired; the heating and lighting systems replaced with modern, eco-friendly lights and infra red heating. The space is now warm and welcoming. The east and west wall have been partially replastered where they had been damp. Fundraising events have allowed us to ensure the roof is weather tight. We have moved some of the pews to create a community space within the church.

We have held several events through the summer to bring the village community together, with the additional benefit of further fundraising:-

June: a very successful village Open Gardens with teas at the church.

July: Church Service for the Asterby Group of Parishes

September: Harvest Thanksgiving

October: Art and Craft Exhibition with Teas, Children's activities, and Bric a Brac

October: The first of our monthly coffee Mornings for the winter season for all villagers



More about our impact



The environment

The rewiring project has meant we have installed eco-friendly lights and heaters, using considerably less electricity than previously. The warmth and lighting has been outstanding, with reduced electricity bills.



The local economy

Whilst the impact on the local economy has been minimal, the village community now has a meeting place and events venue should the local pub be unavailable.



Volunteering, jobs & education

The local community has joined together to offer their skills and help with village events and maintenance work. This has increased the number of volunteers available since the completion of the first part of our project.



Arts, culture & heritage

During the course of the year we have held an art and craft exhibition which was attended by over 50 people. The exhibitors were local artists and crafters displaying a wide range of skills.



Activity, health and leisure

The restored church is being offered for any group wishing to use it for yoga, pilates, gardening or other club activities. Regular coffee mornings are open to all, thereby enhancing physical and mental health.

Case Study: Dog play paddock and exercise area



Tydd St Mary Playing Field Committee raised funds for a fenced off area of their village playing field for dogs to play and run in securely and safely, including play equipment and dog agility equipment.

[Link to project](#)



£2,000 pledged
from South
Holland District
Council



£5,520 raised
overall

34 community
backers



Thank you for helping us to create a dog area. This is the most popular and well used part of the playing field and lots of new friendships have been formed both 2 and 4 legged.

This has also led to other groups such as book club and craft clubs being set up which has all added value to the life of the village.

Much appreciated and woof woof!

Annette Magnus, Tydd St Mary Playing Field Committee

spacehive

Case Study: Remembering Spilsby Union Workhouse



St Mary's Church Hundley PCC are a small parish church in the village of Hundley, Lincolnshire. They raised money to put up an interpretation board in the churchyard to remember the hundreds of workhouse inmates who lie in unmarked graves, for all users of the public footpath and visitors to the church to read.

[Link to project](#)



£1,780
pledged from
Partnership



£2,765 raised
overall

29 community
backers



We found Spacehive to be such a useful way of reaching out to the community to tell them about the project and then easily provide updates. We have had massive support from the village and wider afield. People are really interested in the workhouse.

Using Spacehive has made it very easy to collect donations.

We don't think that a formal grant application would have worked for this project.

Jane Slaymaker, St Marys Church Hundley PCC

spacehive